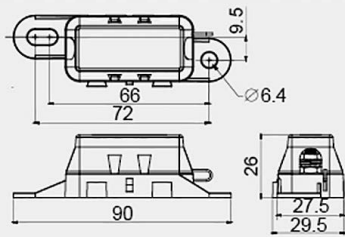
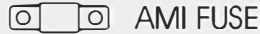


R3-81-03F-83



32V DC, 30A~100A (max.)

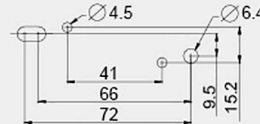
FUSE



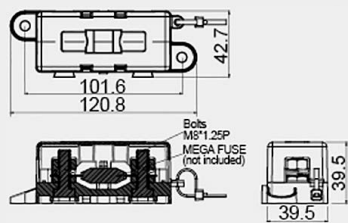
FEATURES:

- Material:
Cover: nylon (UL flame: 94V-2).
Housing: PBT (UL flame: 94V-0).
- Wire size: #2-8 AWG.
- Termination: M5 threaded studs and hex nuts for fuse mounting.
- Torque rating: 20in-lb (2.25 Nm) max.
- Mounting torque rating: 44in-lb (5 Nm) max.
- Side stackable for multiple block configurations.

CUT-OUT



R3-91-03F-83



32V DC, 40A~275A (max.)

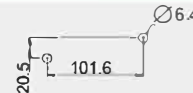
FUSE



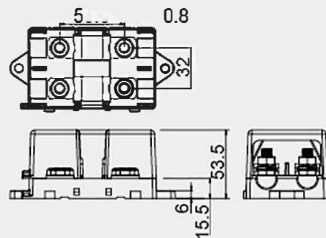
FEATURES:

- Material:
Cover: nylon (UL flame: 94V-2).
Housing: PBT (UL flame: 94V-0).
- Wire size: #2-8 AWG.
- Termination: M8 threaded studs and hex nuts for fuse mounting.
- Torque rating: 20in-lb (2.25 Nm) max.
- Mounting torque rating: 12-18Nm max.
- Side stackable for multiple block configurations.

CUT-OUT



R3-103



32V DC, 40A~400A
(max at each circuit.)

FUSE



FEATURES:

- Material:
Cover: PBT.
Housing: nylon.
Screw: Ni plated steel studs.
- M8 threaded studs and hex nut for fuse mounting.
- Torque rating: 20in-lb (2.25 Nm) max.
- Mounting torque rating: 12-18Nm max. M8 screws with washers.
- unavailable in UK, Netherland, Belgium and Luxemburg markets.

CUT-OUT

